

Specifications:
 Current Rating: 1.5 Amp
 Contact resistance: 20MΩ Max
 Insulator resistance: 1000MΩ Min.
 Withstanding Voltage: 500V AC
 Operating Temperature Range: -40° ~ +105° C
 Material And Finish
 Insulator: Polyester, (PBT UL94V-0)
 Insulator Color: Black
 Contact: Brass
 Contact Plated: See Contact Plated Tab.

Ordering information



- NO. of Rows Pitch:
 1. Single 1.08/0.8mm
 2. Double 2.10/1.27mm
 3. 12:1.27mm
 4. 20:2.0mm
 5. 25:2.54mm

- No. of PIN:
 (1-500) 40=40P
 15=15P

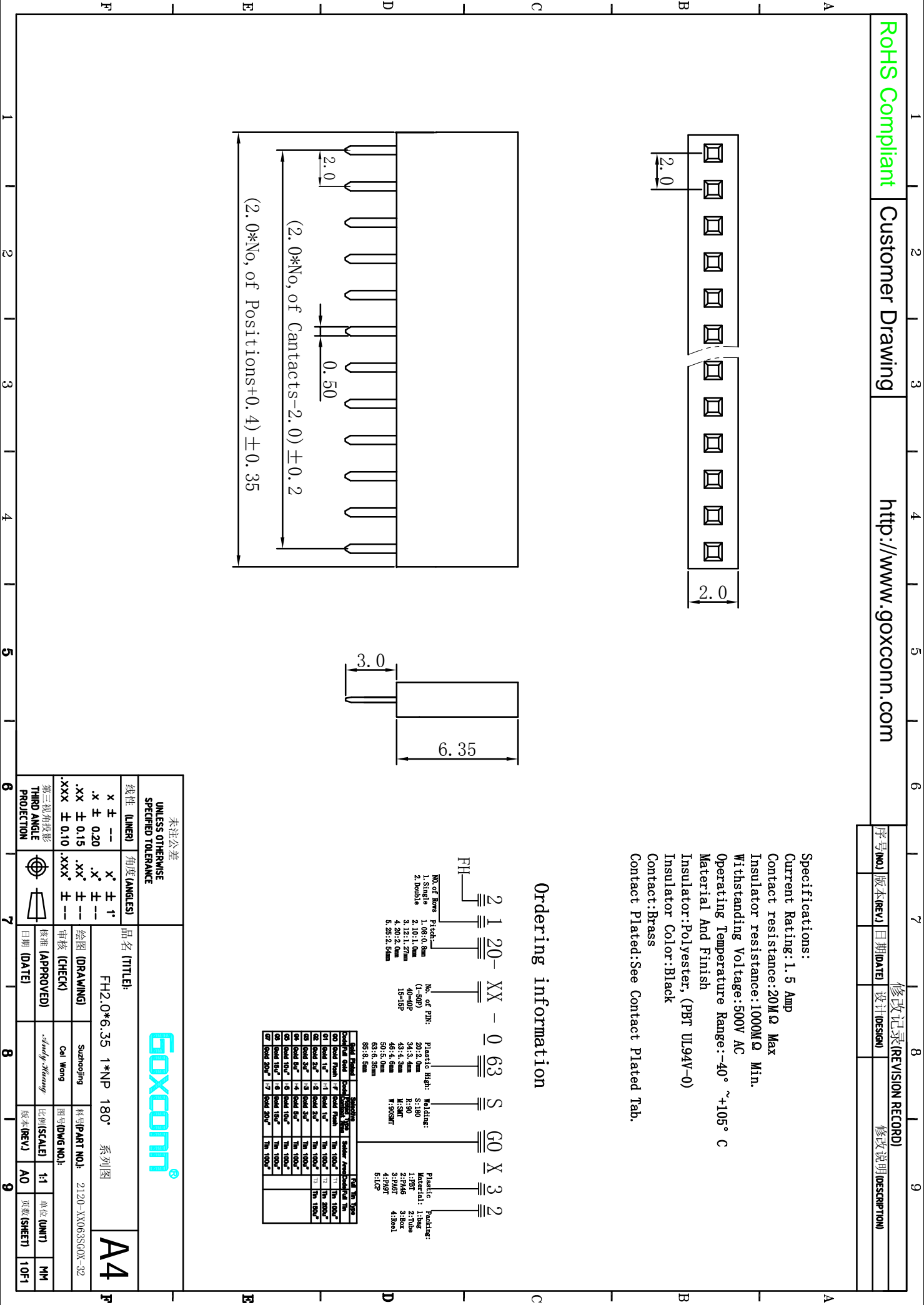
- Plastic Height:
 20:2.0mm
 34:3.3mm
 43:4.3mm
 46:4.6mm
 59:5.9mm
 63:6.3mm

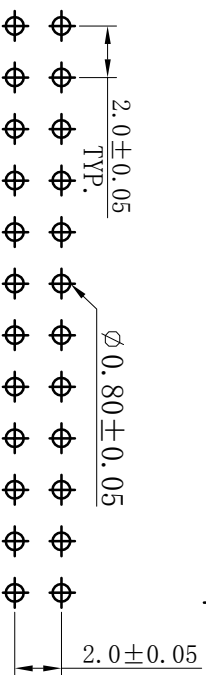
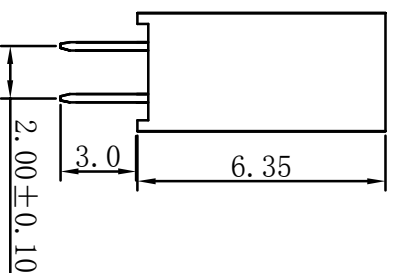
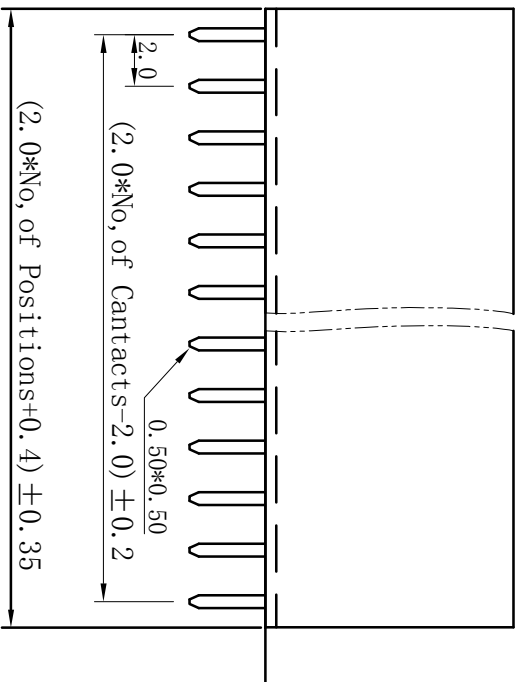
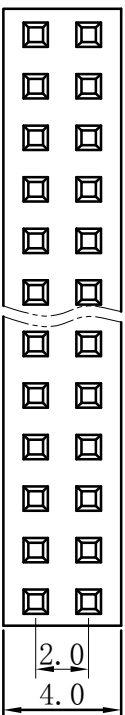
- Welding:
 S:180
 R:90
 M:90MT
 W:90SMT

- Plastic Plating:
 Material: 1:ibag
 2:FR3
 3:25ox
 4:3PMT
 5:1L2P

Order Code	Insulator Material	Insulator Finish	Order Description
00	Insul 100%	10	100%
01	Insul 10%	10	100%
02	Insul 20%	10	100%
03	Insul 30%	10	100%
04	Insul 40%	10	100%
05	Insul 50%	10	100%
06	Insul 60%	10	100%
07	Insul 70%	10	100%

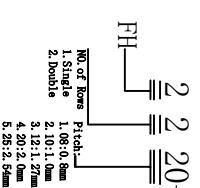
<p>未注公差 UNLESS OTHERWISE SPECIFIED TOLERANCE</p>		<p>线性 (LINER)</p>		<p>角度 (ANGLES)</p>		<p>品名 (TITLE): FH2.0*6.35 1*NP 180° 系列图</p>				<p>图号 (DRAWING)</p>		<p>料号 (PART NO.): 2120-XX063S-GOX-32</p>		<p>比例 (SCALE) 1:1</p>		<p>单位 (UNIT) MM</p>	
<p>.x ± 0.20 .xx ± 0.15 .xxx ± 0.10</p>		<p>x' ± -- .x' ± -- .xx' ± -- .xxx' ± --</p>		<p>第三型角投影 THIRD ANGLE PROJECTION</p>		<p>审核 (CHECK) 日期 (DATE)</p>		<p>批准 (APPROVED)</p>		<p>绘图 (DRAWING)</p>		<p>图号 (DRAWING NO.): 2120-XX063S-GOX-32</p>		<p>版本 (REV.) AO</p>		<p>页数 (SHEET) 10F1</p>	





Specifications:
 Current Rating: 1.5 Amp
 Contact resistance: 20MΩ Max
 Insulator resistance: 1000MΩ Min.
 Withstanding Voltage: 500V AC
 Operating Temperature Range: -40° ~ +105° C
 Material And Finish
 Insulator: Polyester, (PBT UL94V-0)
 Insulator Color: Black
 Contact: Brass
 Contact Plated: See Contact Plated Tab.

Ordering information



Order Code	Insulator	Material	Color	Parting	Finish	RoHS
00	Lead 20P	11	1000°	11	1000°	11
01	Lead 11°	12	1000°	12	2000°	12
02	Lead 21°	13	1000°	13	1000°	13
03	Lead 31°	14	1000°	14	1000°	14
04	Lead 41°	15	1000°	15	1000°	15
05	Lead 51°	16	1000°	16	1000°	16
06	Lead 61°	17	1000°	17	1000°	17
07	Lead 20P	18	1000°	18	1000°	18



品名 (TITLE): FH2.0*6.35 2*NP 180° 系列图

A4

未注公差 UNLESS OTHERWISE SPECIFIED TOLERANCE		线性 (LINER)		角度 (ANGLES)		第三视角投影 THIRD ANGLE PROJECTION	
x ± --	x' ± ± ±	.x ± 0.20	.x' ± ± ±	.xxx ± 0.10	.xxx' ± ± ±		
审核 (CHECK)		日期 (DATE)		批准 (APPROVED)		日期 (DATE)	
绘图 (DRAWING)		Sutchnoing		料号 (PART NO.):		图号 (DWG NO.):	
Call Wang		22220-XX06SSG0X-32		单位 (UNIT):		MM	
·Study Wang		版本 (REV):		页次 (SHEET):		10F1	